

Operating Instructions

ÖWS/ATM-M, Automatic Transmission Flushing System for Mercedes-Benz



Colour: 7015

BG Deutschland / Österreich H. Heinzer GmbH



Werner-von-Siemens-Straße 13 · D-63150 Heusenstamm
Telefon +49 69 / 66 11 99 44 · Telefax +49 69 / 66 11 99 45
info@bgprod.de · www.bgprod.de · www.bgprod.at



© Copyright H:Heinzer GmbH

Since changing the oil does not result in cleaning of the system, but only in an improvement of the oil quality, the oil change system has been so designed that not only a quicker, almost complete change of all the oil is possible but also a preliminary, unproblematic and inclusive cleaning of all components can be achieved.

Before cleaning or oil change is made the user should urgently check the following:

The oil level and quality of the oil

Check of all components and hoses for leak tightness

Procedure

The **ÖWS-ATM-M** is designed for all systems with freely accessible return lines of gears and cooling systems and must be fitted with Daimler AG adapters. **(Adapter kit SWZ W722 589 01 90 00 is not included in the scope of delivery)**

Special adapters (of other automotive manufacturers) are available for the various gear systems as option.

Information at www.bgprod.de

Preparation

In order to work with the ÖWS-ATM the device must be fitted to the return line (cooler mechanism). (Direction of flow to device blue adapter hose)



- 1. The corresponding adapter kit for the Mercedes-Benz gears can be ordered under the SWZ no. W722 589 01 90 00**

2. Return flow from device to vehicle: black connecting hose



3. The system should also be connected to a compressed air line



(Set pressure reducer to 8 bar), so that automatic motor running recognition and oil return flow are possible.



Warning:
Maximal operating oil temperature 120° C

The system has been developed according to a simple 1-2-3 principle.

Lever setting 1+1: cleans and flushes (right and left lever set to 1)



Lever setting 1+2: changes (right lever 1 and left lever 2)



Lever setting 3+2: ready (right lever 3 and left lever 2)



Set the right and left setting lever to „1“. The system is now operational.



Set parking brake and use foot brake.

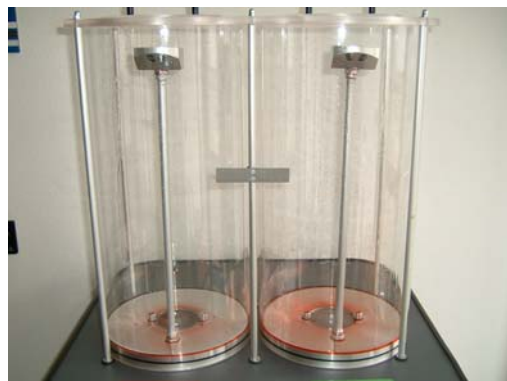
Start the engine and check the fluid level of the device during the first few seconds. The system should not suck any air.

Set the level (waste oil) to about 5 to 10 mm by means of the return volume regulator valve (at the front in the middle). Now go through the gears, then set to D. **Warning:** Do not use the gas pedal!!! Only idling

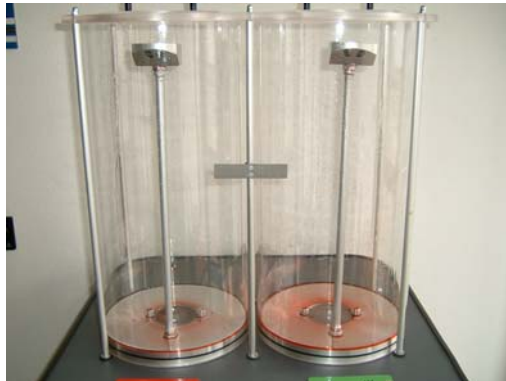


Start Change with Filter Change.

1. Fill the volume of oil to be changed into the new oil tank and set the level mark.



2. After setting the mark turn the mark in the direction of waste oil tank



3. Set return flow valve to zero flow until no more oil flows from the transmission.



4. Switch off engine immediately.
5. Change filter in transmission.
6. Fill the residual oil from the transmission cover in the waste oil (device), change the filter if stipulated and remove any metal particles from the magnet.
7. Replace the oil sump
8. Set lever to „2“ (left setting lever) and set return volume regulator valve (at front in the middle) to **max. until about half of the oil in the waste oil tank has been pumped out of the new oil tank into the mounted oil sump.** (Vehicle engine is switched off)



9. Set return volume regulator valve to zero flow



10. Start engine, depress footbrake, set gear to D and immediately set return flow regulator valve so that return volume and new oil flow volume are the same.



11. When the waste oil reaches the mark, set the right setting lever to „3“. The oil now circulates in the new oil tank. The oil change is now completed.



12. Switch off engine and fill the remaining new oil as required into the transmission via the return flow volume regulator valve.



13. Disconnect ÖWS-ATM device, re-connect the lines to the transmission, check oil level, finished.

Flushing Cooler and Pipes (after changing transmission)

Connect the system to both ends of the pipes, about 1-2 litres of oil (can be from the previous change), set both levers to „1“ (setting lever left + right), Then actuate the return flow volume regulator valve (at the front of the device) and set the flushing volume.



Cleaning the device / the system:

The system can be drained simply via the return flow hose (**black hose**) and the return flow volume regulator valve (at the front of the device). Valves set to „1“ (lever left + right) empties the waste oil tank,



valve set to „3-2“ (lever right and left) empties the new oil tank.



Warning: Do not clean glass parts with detergent or glass cleaner!!

Guarantee: 12 months from date of delivery

Liability is not accepted if the operating instructions are not observed

© Copyright H:Heinzer GmbH